

KTM
PRO-XP

SPITI

ADVENTURE TOUR **SEASON 2**

24TH JUNE TO 5TH JULY



LAND OF THE UNTAMED
LIMITED SEATS: BOOK NOW

ROUTE HIGHLIGHTS

12 DAYS AND 11 NIGHTS



HIGH ALTITUDE
ADVENTURE ACADEMY



CONQUER THE
3 HIGHEST PASSES



EXPLORE INNER ROUTES
OF TIRTHAN VALLEY

BOOK NOW

SPITI ADVENTURE, THE KTM WAY:

Adventures seldom seen and seldom done, the ride to Spiti with KTM PRO-XP has everything that an adrenaline-hungry motorcyclist can ask for and some more. Each route is specially curated and led by our KTM experts who will ensure that you are on the right track toward becoming an adventurer, whilst honing your adventure skills all the way.

For 12 consecutive days, you'll experience high altitude riding, challenging terrains, and surprises that will keep you on the edge of your seat, guaranteeing that you become a pro when the ride ends.



ADVENTURE



SPITI
ADVENTURE
TOUR



KTM Experts

KTM EXPERTS:



JOSEPH CHACKO

**FOUNDER AND INSTRUCTOR -
THE SCHOOL OF DIRT**

With 14 years of experience, he is also an ex-Auto journalist who knows all about adventurous terrains and more.



NILESH DHUMAL

**OFF-ROAD MOTORCYCLE
INSTRUCTOR**

An accomplished mountain bike racer, he has got all the qualities to you into your 2.0 version!



VARAD MORE

HEAD TRAINER - 21 ENDURO PARK

A talented motorcycle journalist and influencer, he knows his way around challenging routes like the one you are about to experience with us.



WHAT to Expect

1
DAY



MANALI

The first day of the tour starts at Manali, where riders and their machines will undergo **Registration, Stickers, check-ups, and servicing**, and will be briefed about the tour.

2
DAY



MANALI TO BITHAL

Highest Altitude reached: **10574** ft
Distance covered: **170** km approx. Duration: **6** hrs
Riding through the Manali and Jalori pass through the scenic **Tirthan valley** we see nature in all its glory as we head towards Bithal Valley..

3
DAY

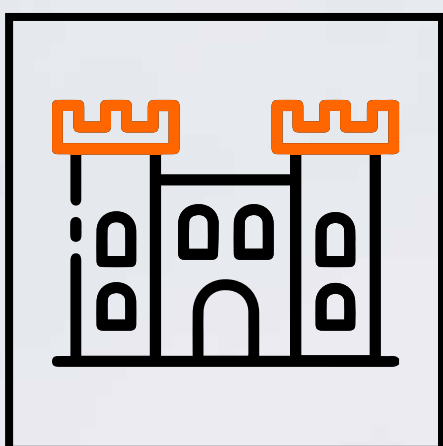


BITHAL TO SANGLA

Highest Altitude reached: **9350** ft
Distance covered: **140** km approx. Duration: **6** hrs
Day 3 starts with a detour via Daran Ghati village and a ride through the back county offroad. A quick visit to Bhima Kali temple, as we begin our climb towards **Cliff hanger road** right up to Sangla.



4
DAY



DAY 4: SANGLA TO KALPA

Highest Altitude reached: **9711** ft

Distance covered: **158** km approx. Duration: **8** hrs

Day 4 starts with an adventure ride through the lush greenery of Sangla Valley to Chitkul – the last village on the India-China border. We then ride down the cliff-hanger road past the Karcham dam to climb up to Kalpa, followed by a bonfire night.

5
DAY



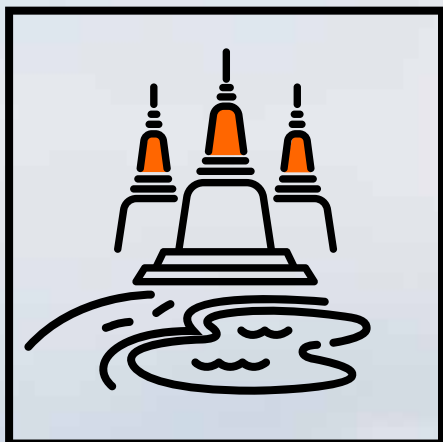
DAY 5: KALPA TO TABO

Highest Altitude reached: **12467** ft

Distance covered: **195** km approx. Duration: **9** hrs

The ride starts with a mesmerizing view of the sunrise at Mount Kailash. We stop at a scenic viewpoint of **Kinner Kailash** mountain, and a short stop at Khab bridge – the confluence of Spiti and Satluj rivers. We then start the adrenaline-filled **cliff hanger climb** to end the day with a Cultural Night at Helipad.

6
DAY



DAY 6: TABO – KAZA

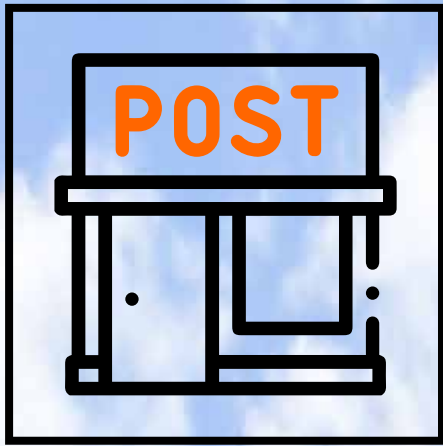
Highest Altitude reached: **12762** ft

Distance covered: **70** km approx. Duration: **8** hrs

Filled with breath-taking experiences, Day 6 starts with a visit to the Tabo monastery, followed by a short visit to the **Dhankar Monastery**. We then ride through Mudh village which will be followed an off-road lunch session in the outdoors. We end the day with dinner at Kaza.



7
DAY



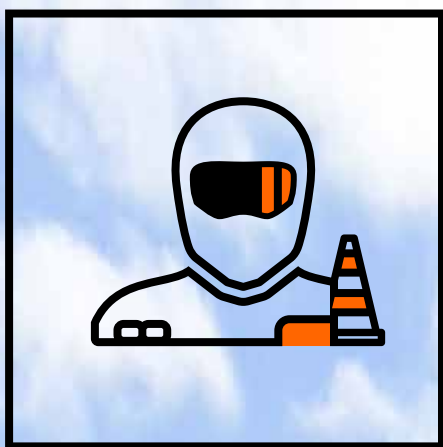
DAY 7: KAZA TO RANGRIK

Highest Altitude reached: **14009** ft

Distance covered: **100** km approx. Duration: **8** hrs

Day 7 of the tour and our riders visit some iconic tourist destinations, including a visit to the iconic Hikkim Post office. A ride through the mesmerizing **Dhar Lung Wooh** to end the day at Rangrik with a bonfire and some music.

8
DAY



DAY 8: KAZA TO RANGRIK

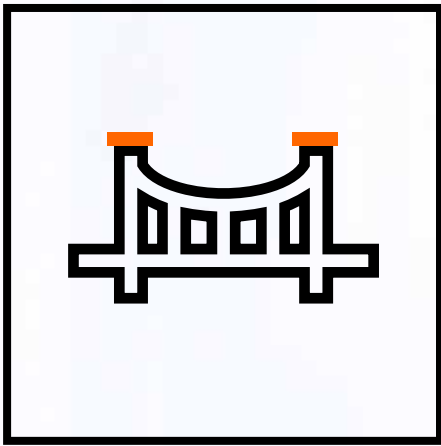
Highest Altitude reached: **14009** ft

Distance covered: **50** km approx. Duration: **8** hrs

Day 8 kick starts with a day at **KTM Adventure Academy** where riders hone in on their off-roading skills, as they take on challenges and harsh terrains. A quick stop for an outdoor lunch session to end the evening at Kaza.



9
DAY



DAY 9: KAZA – CHANDRA TAAL

Highest Altitude reached: **14107** ft

Distance covered: **120** km approx. Duration: **8** hrs

Day 9 of the tour is brimming with action. We start the day with a visit to the Key Monastery.

The highlights of the day are riding across the Highest Bridge in Asia - **Chicham Bridge**, followed by a ride through the notorious **Kuzum La pass** - a high altitude pass, a baptism by fire for our adrenaline junkies.

10
DAY



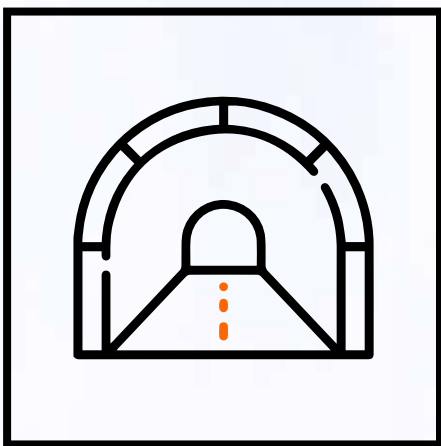
DAY 10: CHANDRA TAL – JISPA

Highest Altitude reached: **10308** ft

Distance covered: **137** km approx. Duration: **7** hrs

The penultimate day of the tour begins with a ride beside **Chandratal Lake**, as we ride through Batal and Koksar Lakes, as we end the day at Jispa

11
DAY



DAY 11: JISPA – MANALI

Highest Altitude reached: **16702** ft

Distance covered: **182** km approx. Duration: **8** hrs

The final day of the tour starts with a long ride back to Manali through the breathtaking high-altitude **Shinkula Pass**. We stop for a photo op and then pass through the iconic Atal Tunnel to end the day celebrating an iconic and memorable tour.

TO KNOW MORE, CLICK RELEVANT LINKS

1. Inclusions & Exclusions
2. Rules & Guidelines
3. Things to carry
4. How to prepare your bike
5. Recommended gear
6. Terms & Conditions

BOOK NOW